

## Door blank with Compact Laminate - 55 mm stiles and rails

**Construction:** 4 mm Compact laminate ( Appr. 1350 kg/m<sup>3</sup> - heat conductivity: 0,25 W/mK )  
 1,5 mm long grain veneer  
 0,3 mm Aluminium - moisture barrier - stabilizer  
 1,5 mm long grain inner veneer  
 Insulation - Polystyrene ( Appr. 20 kg/m<sup>3</sup> - heat conductivity: 0,034 W/mK )  
 1,5 mm long grain inner veneer  
 0,3 mm Aluminium - moisture barrier - stabilizer  
 1,5 mm long grain veneer  
 4 mm Compact laminate ( Appr. 1350 kg/m<sup>3</sup> - heat conductivity: 0,25 W/mK )

**U-Value:**

U-Value - W/m <sup>2</sup> K									
60 mm	68 mm	73 mm	80 mm						
0,80	0,71	0,66	0,63						

Size 1000 mm x 2000 mm  
 Heat conductivity is calculated on the basis of the practical heat conductivity of each included material - taken from data sheets and DS418, version 6, 2002. Also relating to EN 12524.

**Weight:**

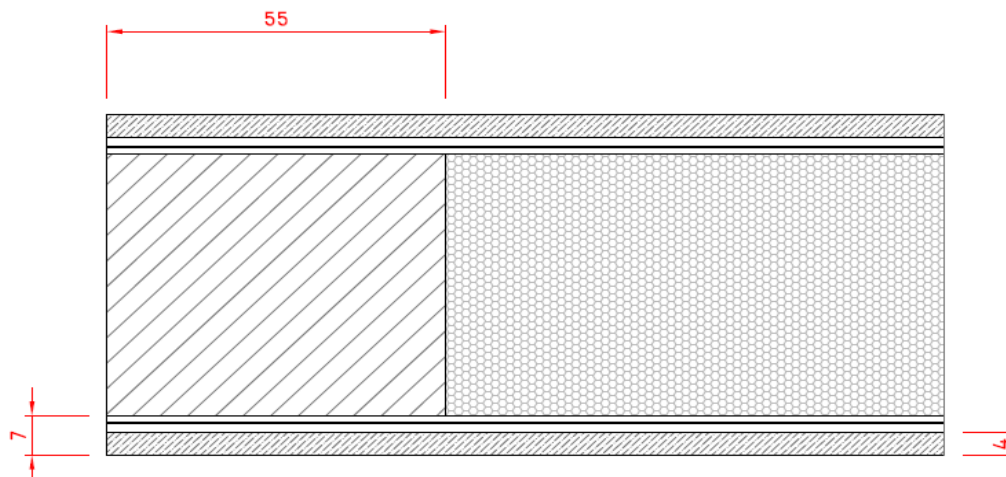
Weight appr. Kg./m <sup>2</sup>									
60 mm	68 mm	73 mm	80 mm						
19,8	20,7	21,2	21,9						

Size 1000 mm x 2000 mm

**Measure:** Min.: 250 x 450 mm - Max.: 1200 x 2400 mm

**Tolerances:** Width/Height: +/- 1 mm - Diagonal: +/- 2 mm - Thickness: +/- 0,8 mm

**Section drawing:**



O.H.Industri A/S  
 Smedevej 17  
 DK - 7430 Ikast  
 +45 9725 1200  
[www.ohindustri.com](http://www.ohindustri.com)

Made: 05.03.14	Data sheet: PMN	Draw.: HMN
Revised: 28.08.14	Data sheet: PMN	Draw.: